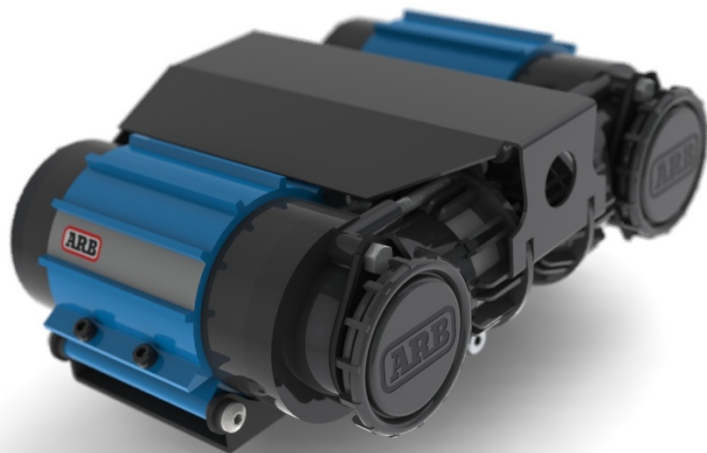




CKMT series specification



Features

- 12 or 24 VDC permanent magnet motors
- 10 BAR [150 PSI] maximum working pressure
- maximum current draw:
 - 69 A (12 V models)
 - 35 A (24 V models)
- Duty Cycle @ working temperature 20°C [70°F]:
 - 100% @ 2 BAR [30 PSI] (continuous)
 - 100% @ 7 BAR [100 PSI] (continuous)
- Intergrated waterproof fan (IP55 rating)
- Thermal overload protected motor
- Fully moisture sealed (low head submersible)
- Relocatable air filter
- Full loom with Maxi blade fuse protection
- Pressure switch (¼ NPT): 10.3/9.3 BAR [150/135 PSI]
- Anodised aluminium heat sink motor mount
- Compressor weight: 7.7 kg [17 lbs]
- Dimensions (LxWxH): 190mm x 275mm x 102mm
[7.5" x 10.8" x 4.0"]

Performance data for 12 V models

PSI	CFM	A
0	6.16	28
10	5.39	38
20	4.95	45
30	4.62	51
40	4.32	55
50	4.00	58
60	3.69	60
70	3.39	61
80	3.14	62
90	2.95	63
100	2.81	64
110	2.69	65
120	2.58	66
130	2.45	67
140	2.31	68
150	2.21	69

BAR	LPM	A
0	174.3	28
1	146.3	42
2	131.7	50
3	119.1	56
4	106.1	59
5	94.1	61
6	85.0	63
7	78.9	64
8	74.3	66
9	69.1	67
10	63.4	68

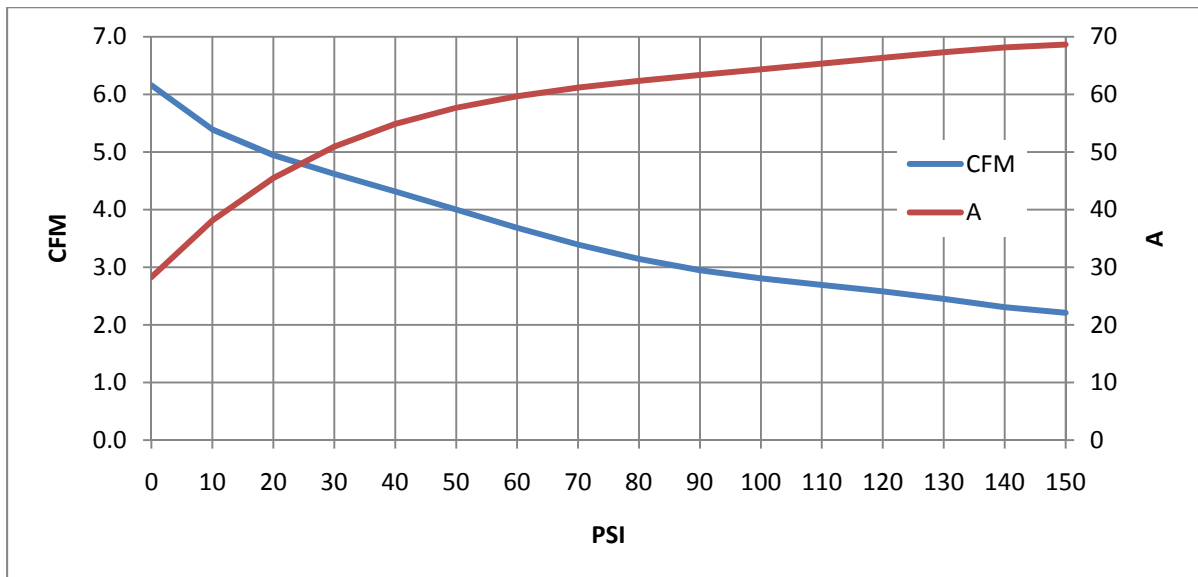
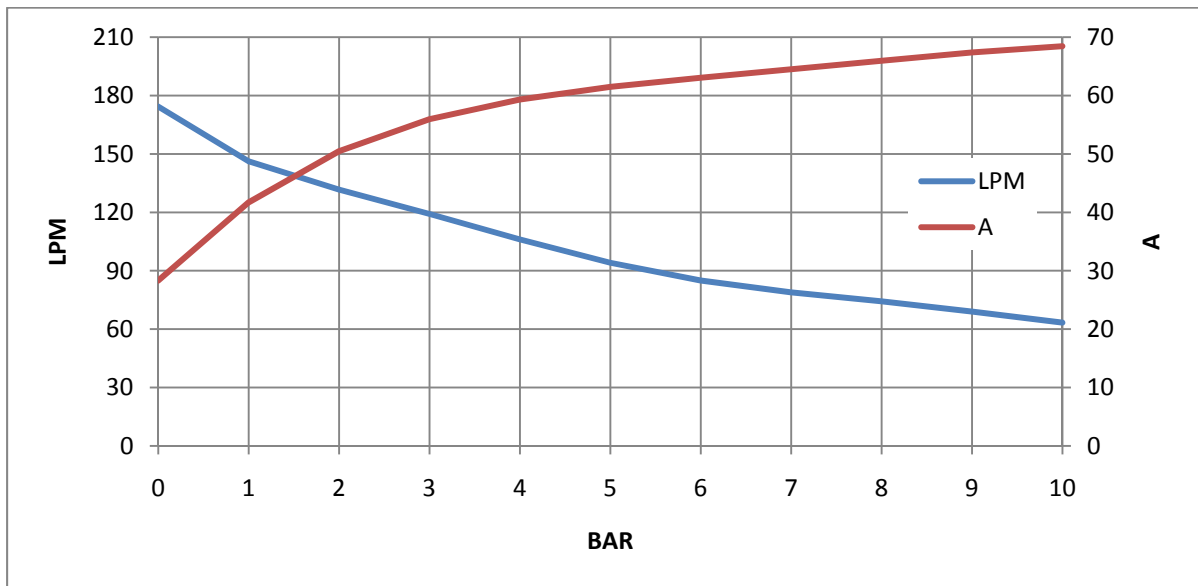
Tank filling times

9.5 Litre [2.5 Gallon]	
0-105 PSI	37 sec
0-130 PSI	50 sec
85-105 PSI	9 sec
110-150 PSI	23 sec

19 Litre [5 Gallon]	
0-105 PSI	1 min 14 sec
0-130 PSI	1 min 40 sec
85-105 PSI	18 sec
110-150 PSI	46 sec

All measurements recorded at 13.8 VDC

Performance charts for CKMT 12 V models



Overall dimensions for models CKMTA12 and CKMTA24

